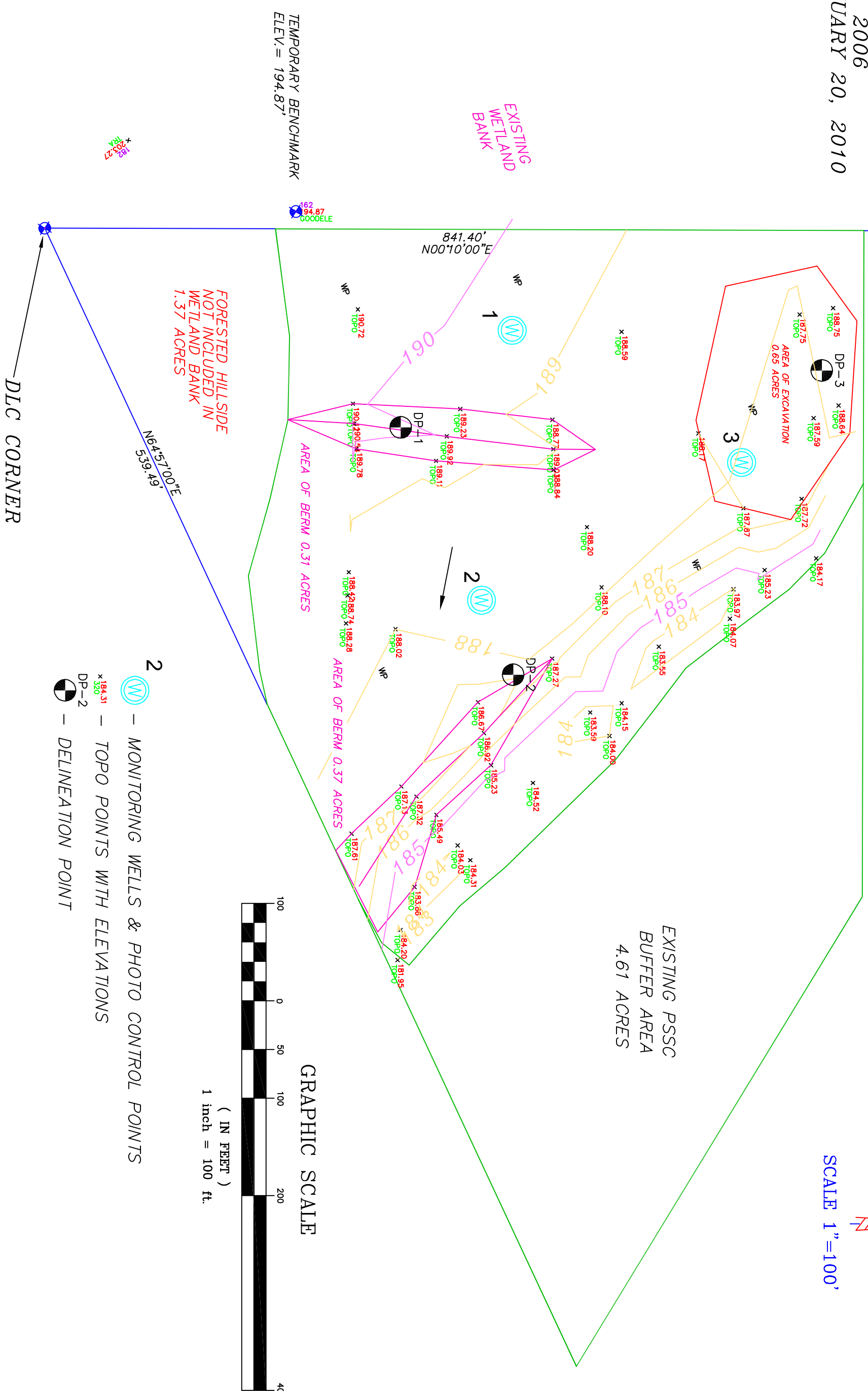


AS-BUILT SURVEY
 MID VALLEY MIDIGATION BANK
 BENTON COUNTY, OREGON
 JUNE 28, 2006
 REVISED: JANUARY 20, 2010

SCALE 1"=100'



TEMPORARY BENCHMARK
 ELEV. = 194.87'

192
94.87
600DELE

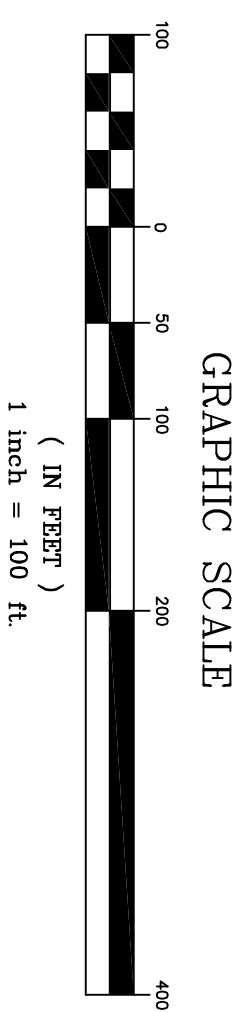
EXISTING
 WETLAND
 BANK

FORESTED HILLSIDE
 NOT INCLUDED IN
 WETLAND BANK
 1.37 ACRES

AREA OF BERM 0.31 ACRES

AREA OF BERM 0.37 ACRES

EXISTING PSSC
 BUFFER AREA
 4.61 ACRES



- 2 - MONITORING WELLS & PHOTO CONTROL POINTS
- TOPO POINTS WITH ELEVATIONS
- DELINEATION POINT

841.40'
 N00°10'00"E

182
203.27

N64°57'00"E
 333.64'

DLC CORNER