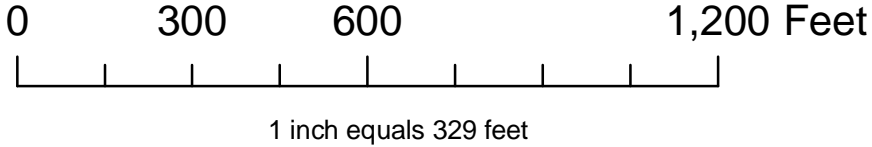
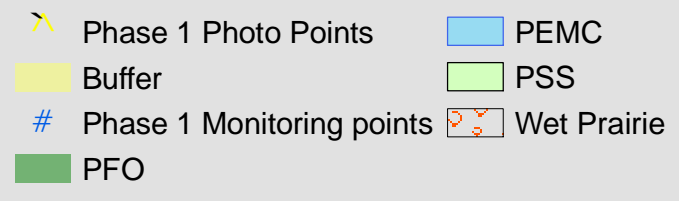
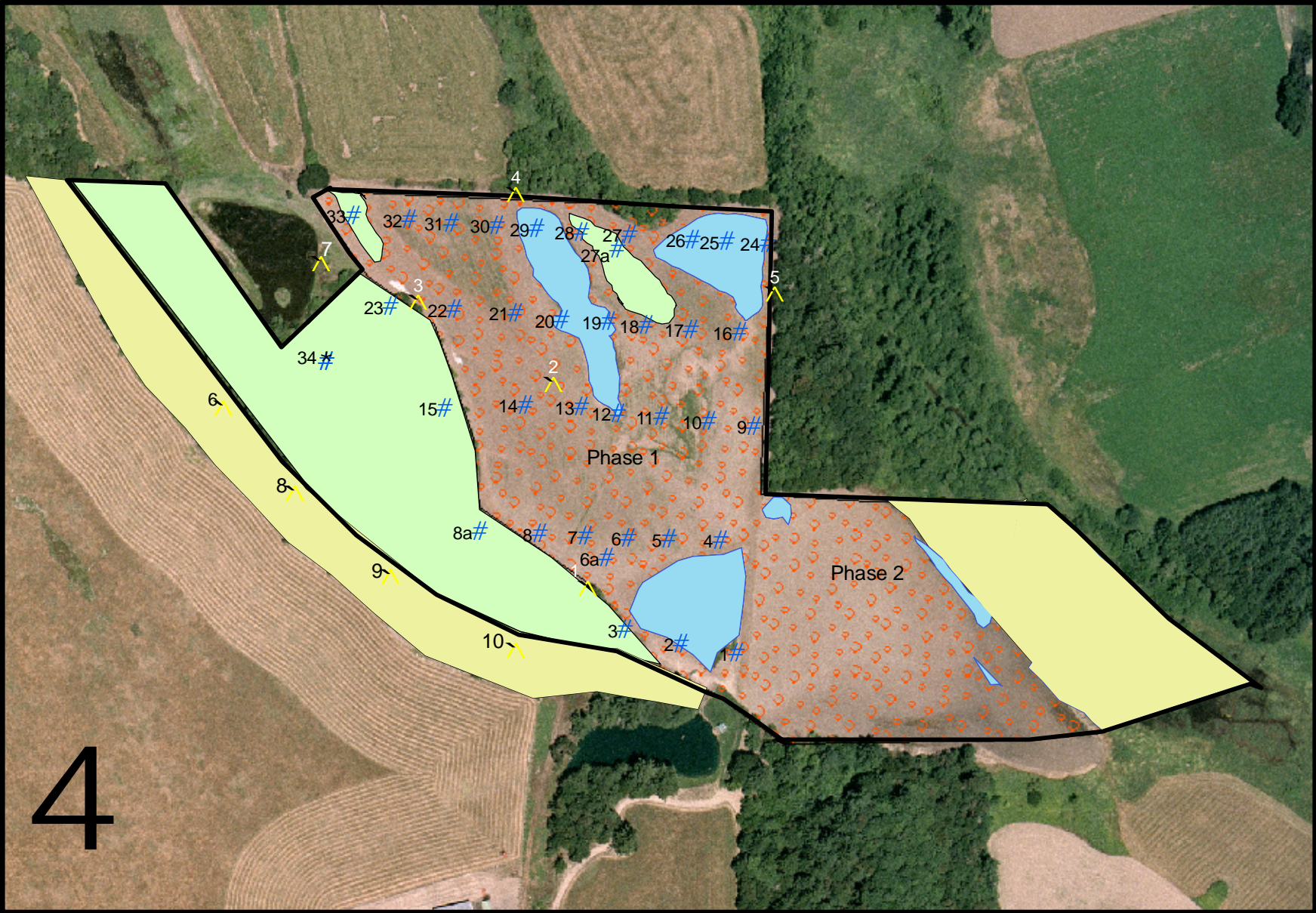


Mid-Valley Mitigation Bank Phase 1 5th Year Photo/Vegetation Monitoring Points



Mid-Valley Mitigation Bank - Phase 1 5th Year monitoring Points									
Botanical Name	Common Name	Status	Origin	new 34*	new pp 6**	new pp 7**	new pp 8**	new pp 9**	new pp 10**
Overstory Species. - stem count (within 30' diameter)									
<i>Acer macrophyllum</i>	Bigleaf maple	FACU	native		6		5	5	6
<i>Crataegus douglasii</i>	Black hawthorn	FAC	native						3
<i>Fraxinus latifolia</i>	Oregon ash	FACW	native	10		2	1	1	3
Scrub/Shrub Species - stem count (within 30' diameter)									
<i>Amelanchier alnifolia</i>	Service berry	FACU	native				1		
<i>Physocarpus capitatus</i>	Pacific ninebark	FACW	native				2	10	
<i>Rhamnus purshiana</i>	Cascara	FACU	native						1
<i>Symphoricarpos albus</i>	Snowberry	FACU	native						3
Herbaceous Species - percent cover (1 meter square sample plots)									
<i>Bidens cernua</i>	Nodding beggarticks	FACW+	native	5					
<i>Camassia quamash</i>	Common camas	FACW	Native		15				
<i>Carex obnupta</i>	Slough sedge	OBL	native	20					
<i>Cicuta douglassii</i>	Western water-hemlock	OBL	native	75					
<i>Polystichum munitum</i>	Sword fern	FACU	native		15		20	50	70
<i>Rubus ursinus</i>	Trailing blackberry	FACU	native		70		80	50	30
Grass Species - percent cover (1 meter square sample plots)									
<i>Beckmania syzigachne</i>	Slough grass	OBL	native			40			
<i>Deschampsia cespitosa</i>	Tufted hairgrass	FACW	native			60			
*New plot in existing forested for 5th year monitoring									
**New plots in buffer for 5th year monitoring. Points were used for photo as well as monitoring points									

Mid-Valley Phase 1 Mitigation Bank 5th Year Photo Monitoring

Photo Point 1 North



Photo Point 1 East



Photo Point 1 South



Photo Point 1 West



Photo Point 2 North



Photo Point 2 East



Photo Point 2 South



Photo Point 2 West



Photo Point 3 North



Photo Point 3 East



Photo Point 3 South



Photo Point 3 West



Photo Point 4 North



Photo Point 4 South



Photo Point 4 East



Photo Point 5 Southwest



Photo Point 5 North



Photo Point 5 Northwest



Photo Point 5 South



Photo Point 7 Northwest



Photo Point 6 North



Monitoring Point 34 North



Monitoring Point 34 South



Photo Point 8 North



Photo Point 9 North

Photo Point 10 North

